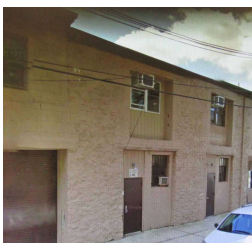
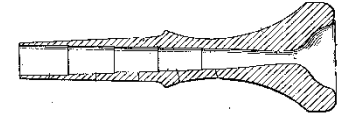
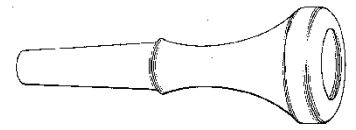


Frank B. Zottola

Port Chester, NY

- 1916 Frank Zottola was born to Italian immigrant parents in Stamford, CT on February 7th(census).
- 1930 Frank with parents in Stamford, #15 New St (census).
- 1935 Frank was living in Stamford (census).
- 1940 Frank was married to Marie and living with her parents in Fairfield, CT who had moved there from Port Chester, NY. He was listed as a musician for the WPA (census).
- 1947 Son Glenn was born in Port Chester, NY.
- 1949 Frank was director and staff conductor for the Westchester Pops Concerts and the Port Chester Symphonic Orchestra (news article).
- 1952 Franks started developing his stepped taper mouthpiece design (Glenn Zottola).
- 1954 Frank started his mouthpiece company. Address shown in undated ad was #40 Beech St (bottom left, center door).
- 1955 Frank filed for his mouthpiece patent (top drawings).
- 1956 Frank was conductor of the Westchester Pops Orch. and the Musician's Association Concert Band (news article).
- 1957 Frank was granted patent #2,798,402 for his mouthpiece.
- 1983 Frank was still making his mouthpieces in Port Chester (*Yonkers Herald Statesman*, Dec. 13, 1983).
- 1999 Frank died in Greenwich, CT on May 13; self-employed musician; address was #32 Browndale Place, Port Chester (death cert.) (bottom center photo).
- 20?? Zottola mouthpieces was purchased by Dick Akright of A&G Music in Oakland, CA with plans to put them back in production (as of 2018 this had not happened).
- 2018 RS Berkeley was making the Glenn Zottola trumpet mouthpiece based on a modification Frank made in 1979.

Cornet & trumpet mouthpieces are series 62 (smallest diameter cup), 64 & 66 with letters A to E designating deep to shallow depth. He also made a "Symphony" back bore.

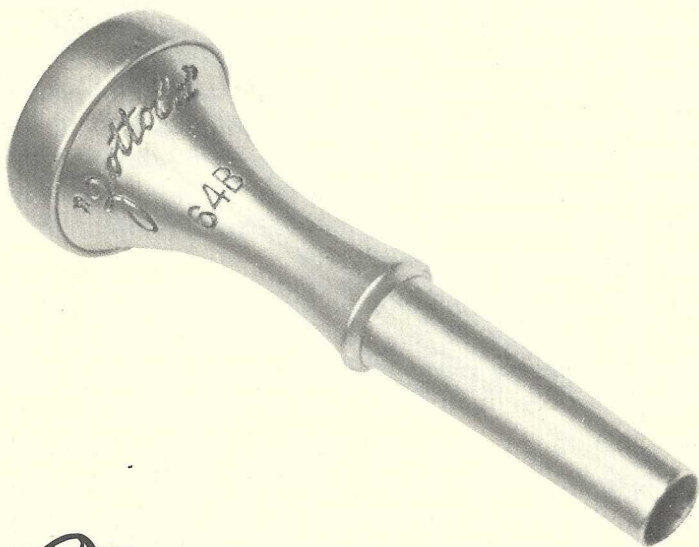


*Low
Frank Scelfo Ad in
is putting
Bandwagon
\$35.00/year*

Zottola

MOUTHPIECE

THE WORLD'S FINEST
PRECISION BUILT MOUTHPIECES
ENGINEERED FOR THE
CENTER OF SOUND



PRODUCTS,
PORT CHESTER, NEW YORK, U. S. A.

THE ZOTTOLA MOUTHPIECE

In his quest for the ultimate in brass mouthpieces Frank Zottola, accomplished instrumentalist, arranger, conductor, manufacturer and design research engineer, explored the gamut of acoustical variations to no avail. His goal was to achieve a significant advance in sound reproduction, which in his own words would allow the brass player to create a full yet focused and brilliant tone with less effort and without any of the harshness or distortion inherent in so many earlier mouthpiece "innovations". Strangely enough his experiments led him out of the machine shop and into Nature's own laboratory.

Nature's Laboratory

In 1952, while walking through a quiet New England woods he came upon a smoothly flowing stream. Almost subconsciously his practiced musician's ear noticed that it was producing a dark and diffused tonal quality.

As he wandered along a little further where periodic rock barriers on the stream's bed interrupted the water's flow creating turbulence, he became aware of the increase in brilliance and compactness of sound. When the stream ultimately broke into a waterfall, crashing down on the descending steps and the pitch, intensity and volume reached its maximum. Mr. Zottola had an instant realization that he could extend this natural phenomenon to its practical application in mouthpieces.

He reasoned that a stepped back-bore design could very well be the answer that contemporary brass players, with their increasing range and endurance demands have been searching for during the last several decades.

The Zottola mouthpiece, with its unique patented back-bore is manufactured on a limited production basis and under the careful supervision of the Zottola family. Their concern with precision, quality and personalized service, things of the past in this age of computerized mass production has led to world wide acceptance of this fine instrument.

FEATURES OF THE ZOTTOLA MOUTHPIECE

One of the greatest achievements in this mouthpiece is the extra two tones in the higher register. Exerting the same amount of effort as you normally would with any other mouthpiece the same size. This important factor could mean the vital difference between being able to play first or second chair.

CENTER OF SOUND

Of all the models, the 64-B Trumpet and Cornet, and the 96-B Trombone are perfection in a mouthpiece, for they are direct center of sound. Starting from this point and working up or down, you will be able to acquire the extremes desired. The Zottola system has a mouthpiece to fit every brass man's needs. It is almost impossible not to be satisfied.

INTERCHANGING MOUTHPIECES

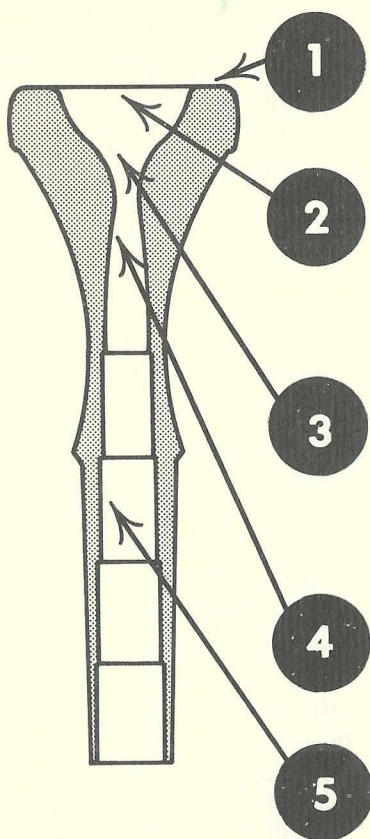
It is commonly known, by interchanging mouthpieces with different diameters or bores, you endanger your lip, unless you make a definite change over a fairly long period of time and do it very carefully under the supervision of a teacher or qualified musician. The Zottola Mouthpiece makes it possible to play three mouthpieces, interchangeably. For example, suppose you are playing a 64-B mouthpiece (good for all around work.) If, for some reason, you would like to favor your higher register, you can change to a 64-C, which has a shallower cup. Or if you desire to favor the lower register, you can change to a 64-A, which has a deeper cup. These three 64 models are of the same diameter and feel. However, you cannot interchange from 62 to 64 or from 64 to 66, etc. This would endanger your lip because of different diameter changes of each mouthpiece.

The Zottola Mouthpieces are silver plated. In its beautiful appearance, Mr. Zottola has not sacrificed the most important part of the mouthpiece, the genuine sound produced. This masterpiece has both sound and eloquent beauty. The Zottola Mouthpiece has a standard size rim on all models, which Mr. Zottola found to be the most comfortable.

The world's finest precision built

MOUTHPIECE

offers these unique features



THE RIM is designed to insure the comfort necessary to produce fine tones and at the same time allows the required freedom for flexibility.

THE PROPER GRIP CHAMFER is so designed that the attack responds quickly and the sustaining notes can be held without interrupting the vibration of the lip. This induces *less fatigue* and at the same time sustains a brilliant tone.

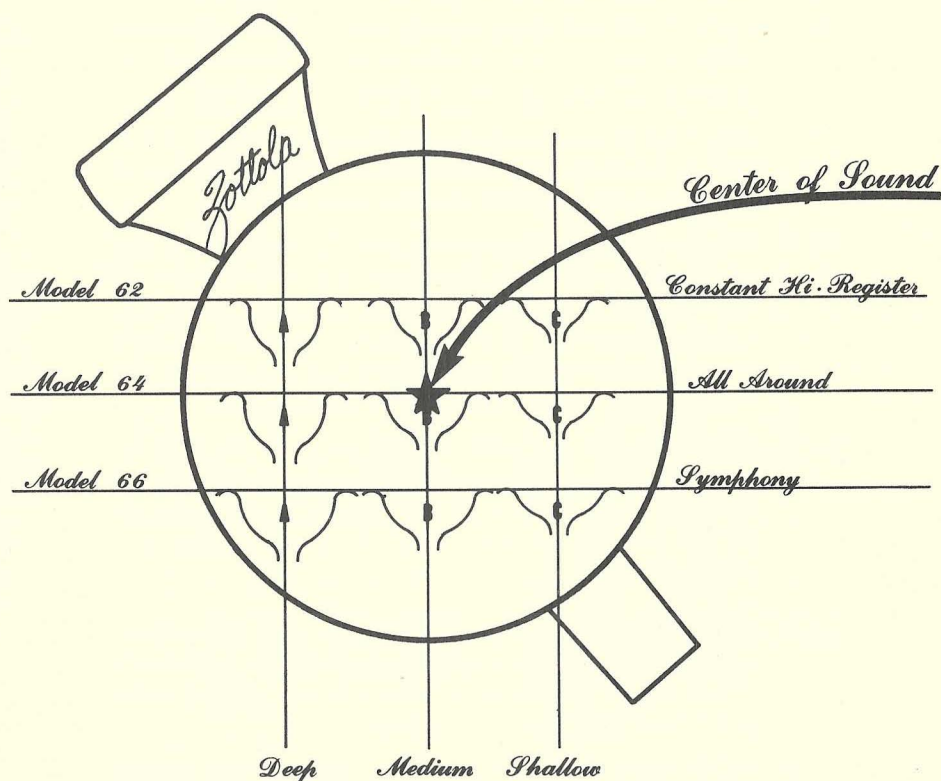
THE BORE or better known as "the cup," is developed in the form of a French Curve thereby creating the necessary resistance plus producing the ultimate in brilliant sound. This is the result that all trumpet players are ever seeking.

THE THROAT HOLE is of great importance and is designed to insure the pure flow of sounds in both *Low and High Register*.

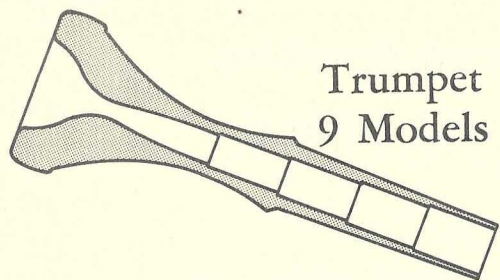
THE BACK BORE is the *Important Feature* of the "Zottola Mouthpiece." The back bore, precision built, is constructed in a graduated step design which insures the delivery of the tone produced by the player. Today's expression of exciting tones in the higher register is made more easily possible with the controlled design of the "Zottola Back Bore." The instrumentalist will be impressed with his effortless reach in "shakes," "trills," and the many other extreme demands in our Modern Music Trend of Today.

Engineered For The Center OF Sound

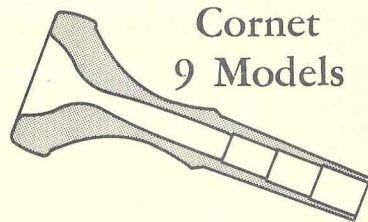
for
All Brass Instruments
Covering the Complete Scope
With 9 Models



A "Quality-Approved" ACCESSORY



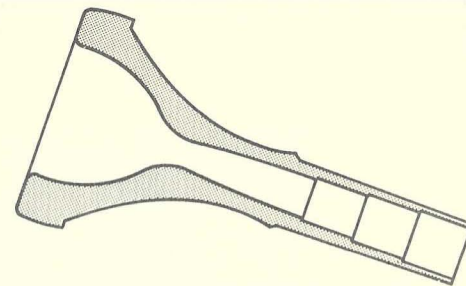
Trumpet
9 Models



Cornet
9 Models

- 66-A Large bore and deep cup for symphony players who prefer very big volume and not much brilliance. Strong embouchure needed.
- 66-B Large bore and medium cup also for symphony players. This model produces a little more brilliance and still produces big sound.
- 66-C Large bore and shallow cup for modern symphony players. This model produces big volume and extreme brilliance. Strong embouchure needed.
- 64-A Medium Bore and deep cup for professional musicians. This model favors lower register and nice mellow mild register. Strong lips needed.
- 64-B Medium bore and medium cup. This model is the center of sound. It is the peak of perfection for all around playing. This model produces a very rich, brilliant sound in the low notes as well as high notes. Professionals and artists from all over the world have chosen this model mouthpiece.
- 64-C Medium bore and shallow cup same as 64-B in all respects with exception that it creates a little more brilliance and high register. Especially recommended for players on first chair, in dance bands, and tough shows.
- 62-A Small bore and deep cup. Players who have thinner lips can use this model for symphony and small band work. Produces a nice mellow sound with good low and middle register.
- 62-B Small bore and medium cup. This is the second most popular model. Good jazz musicians and good first trumpet players all over the world have performed beautifully, in brilliance, high register and big volume.
- 62-C Small bore and shallow cup. For extreme and constant high register. Lips don't tire too easily. Screammers, and jazz musicians find it good.

Trombone
6 Models



- 99-A Large bore and deep cup. A fine model for players in concerts, bands, symphony orchestras. Produces a beautiful and big volume. Low tones, middle register fine. Also can be used for baritone horn; players with strong or thicker lips required.
- 99-B Large diamond and shallow cup. This mouthpiece produces a full, clear, and brilliant sound. Good for baritone horn also. Symphony and concert band players. Strong and thicker lips required.
- 96-A Medium bore and deep cup. This model is accepted for symphony soloists, and band work. Produces a rich, mellow, and some brilliance in tone. Big volume is always desired for symphony.
- 96-B Medium bore and Shallow cup. This model is center of sound. Students, professionals throughout the world, and artists consider this model all around. Produces a rich, brilliant, big sound and very flexible for any type playing. Truly a masterpiece.
- 93-A Small bore and deep cup. Produces a nice dark tone, with some brilliance. Dance band players, students and professional musicians with thinner lips, find this model fine.
- 93-B Small bore and shallow cup. If you are looking for extreme high register, brilliance, rich, and beautiful tone, this model is it. Students, professionals, jazz men, with thinner lips get best results from this model.

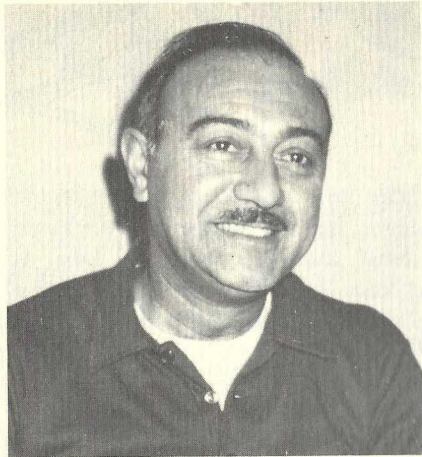
Fluegel horn — 3 Models

Large 66 FL Med. 64 FL Small 62 FL

French horn — 3 Models

Large 69 FR Med. 68 FR Small 67 FR

All other mouthpieces can be made on Special Order.



All the advantages mentioned about the Zottola Mouthpiece will help you to get the perfection you desire. Remember: "A Good Mouthpiece Is Just As Important As A Good Horn." With a Zottola Mouthpiece and a good horn, you can be sure to get the best results, and enjoy every hour of your playing.

All our mouthpieces in all models are uniform and tested with precision gauges.

FOR PROFESSIONALS ONLY

If any duplication or alteration of special custom fitted mouthpieces are desired, Mr. Zottola personally will fill your needs.

ZOTTOLA PRODUCTS
 PORT CHESTER, NEW YORK 10573
 U. S. A.

Zottola

MOUTHPIECE

Price List

All Mouthpieces are Silver plated

Trumpet	\$12.50 each
Cornet	12.50 each
Trombone	18.50 each
Flugel Horn	18.50 each
French Horn	18.50 each

ALL OTHER MOUTHPIECES CAN BE MADE ON SPECIAL ORDER.



Zottola Mouthpieces are Sealed For Safe Shipment in any part of the World.



Oil for Valves and Slides 60c each



PRODUCTS,
 PORT CHESTER, NEW YORK, U. S. A.